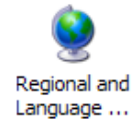


Enabling Community Language Support in Windows XP

You will need Administrative privileges to enable the use of community language support on your computer. This will not be a problem for your home computer, but will require the intervention of your network manager in an educational institution.

Firstly you will need to ensure that the necessary files for complex script and right-to-left languages have been installed.

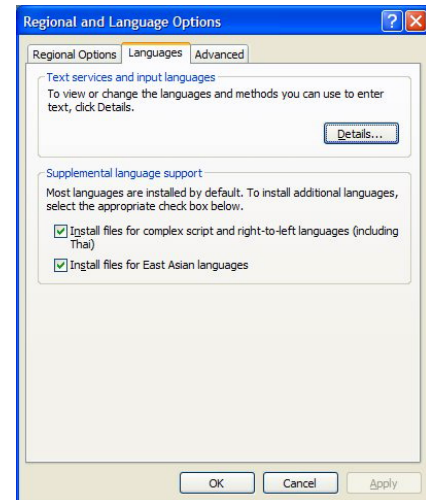
Go to **Start** then **Settings** then **Control Panel** and double-click on **Regional and Language Options**.



When the "Regional and Language Options" dialogue box appears, select the "Languages" tab at the top of the box and then select "Install files for complex script and right-to-left languages". If the files necessary for Bengali are not already installed, you will be asked to insert the "Windows XP" CD, which will allow you to install the missing files – simply follow the instructions which will come up automatically.

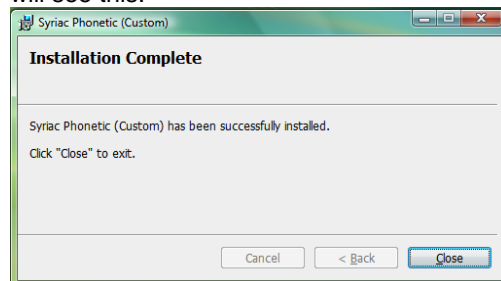
Then install the keyboard for the language you wish to use. You will need Administrative privileges to enable the use of community language support on your computer. This will not be a problem for your home computer, but will require the intervention of your network manager in an educational institution.

Firstly install the keyboard for the language you wish to use.

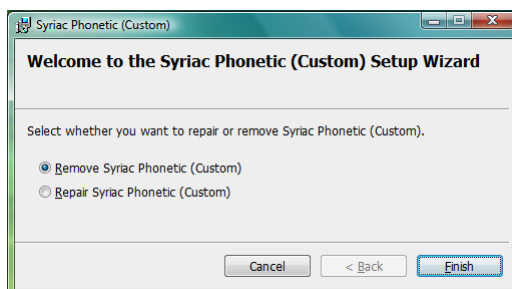


The software to do this is contained in the file `bengali.zip` which can be downloaded from a link to be found on: <http://www.languages.devisland.net/community/bengali/index.htm>.

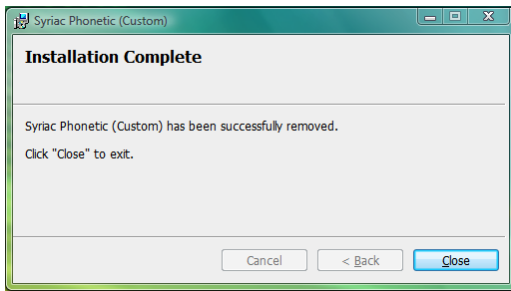
When you have downloaded the file, right click on `bengali.zip` and select "Extract all ,,," following the instructions. Open the folder "bengali" and run "Setup.exe" whereupon it directly installs the keyboard. You will see this:



If you run `setup.exe` a second time, you can repair or remove the keyboard layout.



If you remove the keyboard, you will be informed that the operation has succeeded.

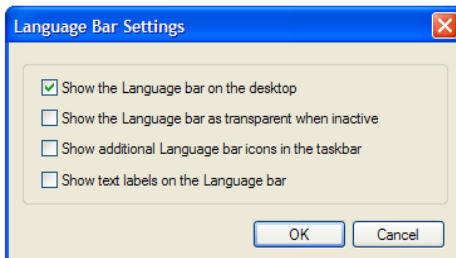


With Windows XP, the keyboard layout will automatically be added to the language bar on install and removed on uninstall.

The Language bar is a toolbar that appears on your desktop automatically when you add text services, such as input languages, keyboard layouts, handwriting recognition, speech recognition, or input method editors (IMEs). The Language bar provides a quick way to change the input language or keyboard layout from your desktop. You can move the Language bar anywhere on your screen, minimize it to the taskbar, or hide it.

To show the Language bar

Go to **Start** then **Settings** then **Control Panel** and double-click on **Regional and Language Options**. Press the "**Details ...**" button. A new dialogue box will appear entitled "**Text Services and Input Languages**". Click on **Language Bar ...** and a dialogue box will appear entitled **Language Bar Settings**

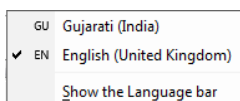
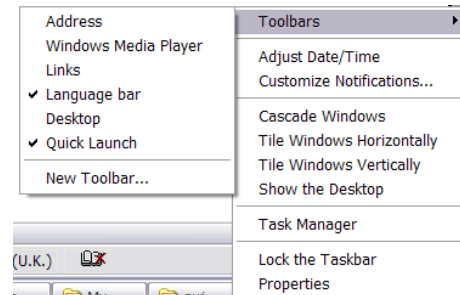


Select **Show the Language bar on the desktop** and click **OK**. Click OK to exit all the dialogue boxes you have opened.

The Language Bar will appear somewhere on your desktop and you can move it to where you find it most convenient



If you wish to have the language bar located in the bottom right hand corner of the screen on the Task Bar, right click in the bottom right hand corner and then select **Toolbars** and then **Language Bar**.



When you want to input the chosen language, for instance Bengali, in a document, you simply need to click on **EN** (for English) to bring up the list of available languages and select **BN** (for Bengali.)

To return to English click on **BN** and select **EN** (for English)

Whichever you select, the keyboard will insert the characters of that language.

If the **Language Bar** option in the **Text Services and Input Languages** dialogue box, referred to above, is not available, click the **Advanced** tab at the top and ensure that the option marked **Turn off advanced text services** is not checked.

