

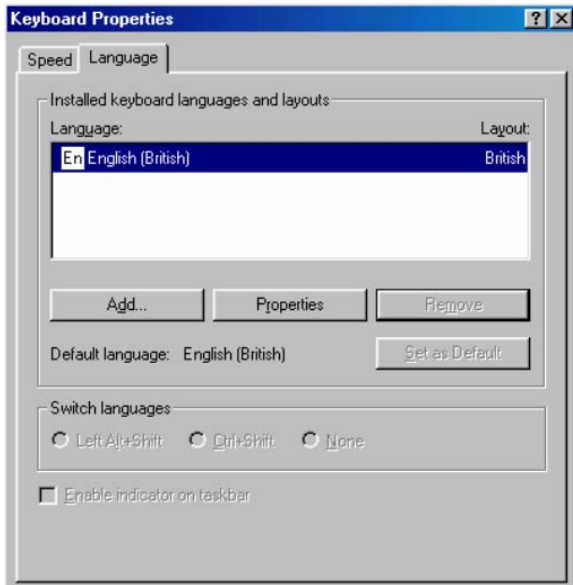
Enabling Arabic Support in Windows 98

You will need Administrative privileges to enable the use of Arabic on your computer. This will not be a problem for your home computer, but will require the intervention of your network manager in an educational institution.

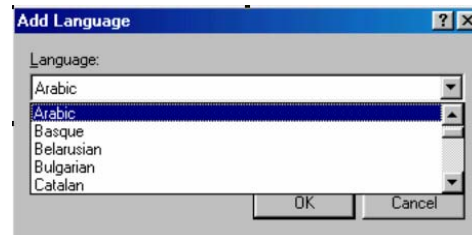


You need to enable your keyboard to work with Arabic. Go to **Start** then **Settings** then **Control Panel** and click on **Keyboard**.

When the **Keyboard Properties** dialogue box appears, select the **Language** tab at the top of the box.



Click on **Add**. A dialogue box will appear entitled **Add Language**. Choose **Arabic** and click OK. This will return you to the Keyboard Properties dialogue box.

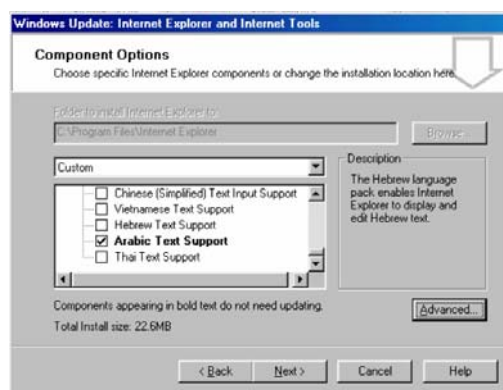
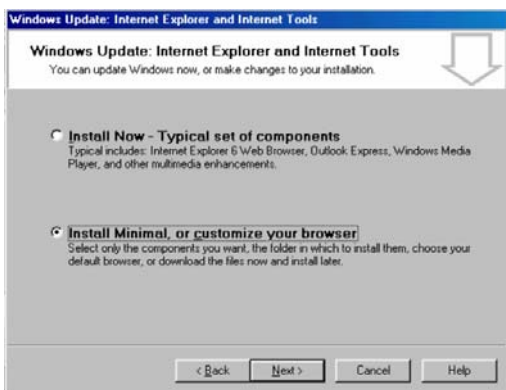


Before you click **OK** again, make sure that **Enable indicator on taskbar** is selected. This will place an icon on the taskbar in the bottom right-hand corner of the screen, which will enable you to switch between English (EN) and Arabic (AR) as the input language.



If "Arabic" was not available from the list in the "Add language" box, you will need to install "Arabic support" from Microsoft. The best way to do this is to install or upgrade to the latest version of Microsoft Internet Explorer and specify Arabic support. This is because Arabic support was not yet developed when Windows 98 was first released.

Internet Explorer can be downloaded from <http://www.microsoft.com/windows/ie/default.asp>. When you start to install the software, select **Install Minimal or customize your browser** and then in the "Component options" box, select **Arabic text support**".



Once you have Arabic support installed on your computer, you can return to the instructions at the start of this page to enable your keyboard to work with Arabic. When you have enabled your keyboard as above, you will find that you can type in Arabic in Word and other Microsoft applications such as PowerPoint, but you may still not be able to use the Copy, Cut or Paste facility properly for Arabic. Do not be surprised if the text you have copied is pasted as a set of nonsensical characters. This issue is resolved in Windows 2000 and later.