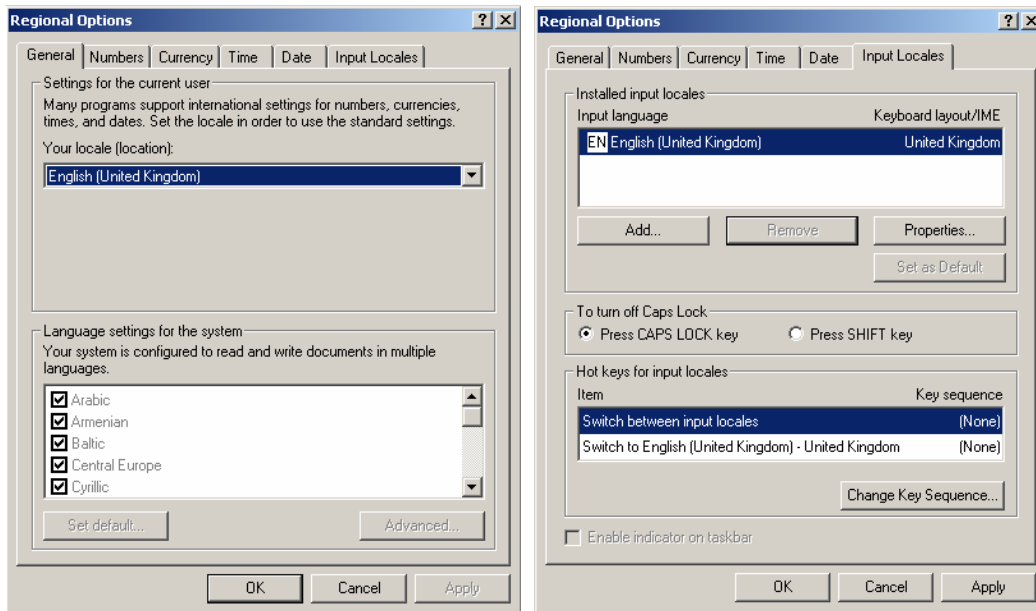


Enabling Arabic Support in Windows 2000

You will need Administrative privileges to enable the use of Arabic on your computer. This will not be a problem for your home computer, but will probably require the intervention of your network manager in an educational institution.

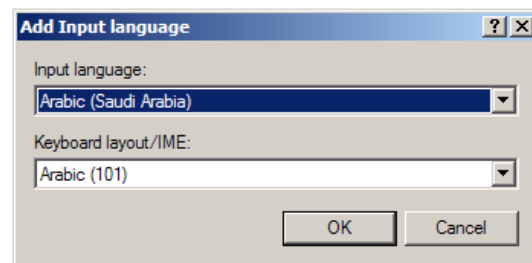
Go to **Start** then **Settings** then **Control Panel** and double-click on **Regional Options**.

When the "Regional Options" dialogue box appears, select the "General" tab at the top of the box and then select "Arabic" from the list under "Language settings for the system". If the files necessary for Arabic are not already installed, you will be asked to insert the "Windows 2000" CD, which will allow you to install the missing files – simply follow the instructions which will come up automatically. When the necessary changes have been made and you have finished with the CD, select the "Input Locales" tab at the top of the box.



Now you need to add Arabic as an input language before your computer will accept typing in Arabic.

Click on **Add**. A dialogue box will appear entitled "Add Input Language". Choose "Arabic" for "Input Language" (it does not greatly matter which country you choose; the most common choice is "Saudi Arabia".) Choose "Arabic (101)" for "Keyboard Layout / IME" and press OK.



Click OK to exit all the dialogue boxes you have open. You should then see a language indicator in the System Tray (usually located in the bottom right hand corner of your screen.) It is marked "EN" in the illustration below; simply click on it to bring up the choice of available keyboard languages and select the option "AR" when you want to type Arabic in a document.

